

LCD display & integrated printer

The user-friendly, multi-language LCD display indicates temperature, pressure, term and cycle status. It allows an easy selection of the 13 different programmes. Any deviations or errors are shown in the display and are partially accompanied by an acoustic signal. The CleanTec CB23 has an internal printer for documenting the sterilization cycles. Also a USB 3.0 connection for easy data saving is integrated.

Technical specifications

Overall dimensions (L x H x D): 505 x 400 x 650 mm
Weight (with empty tanks): 50 kg
Weight (with full tanks): 55 kg
Colour: RAL9002
Material: SUS304 Steel
FeP01 Steel (Cover)
Noise level at 1 m distance: 54 dBA
Noise level in front of the display: 63 dBA

Electrical specifications

Rated voltage: 230 V ~ 50/60 Hz
Rated input: 1950 W
Supply cable: (L 1.5 m) 2+1 x 1.5 mm²
Fuses T6A
Insulation: Class I

Chamber specifications

Max. working pressure: 0.21 MPa (relative)
Max. working vacuum: -82 kPa (relative)
Max. vacuum (drying process): -94 kPa (relative)
Max. working temperature: 137°C
Material: Stainless steel SUS 304
Dimensions: Ø x P 250 x 450 mm

Clean water tank + Dirty water tank specifications

Max. capacity: 4.5 l
Cycles per tankful: ~4
(before the min. level indicator lights up)
Material: Stainless steel

Bacterial filter data

maximum diameter: 56 mm
max. allowed filtering capacity: 0.3 µm
No. of cycles before replacement: ~150



S T E R I L I Z A T I O N



Ritter®
[THE DENTAL EXPERTS]

Ritter®
[THE DENTAL EXPERTS]

Ritter Concept GmbH
Freiburger Str. 45
88400 Biberach, Germany

Fon 0049 7351 / 52 925-10
Fax 0049 7351 / 52 925-11

info@ritterconcept.com
www.ritterconcept.com

Your Ritter-Partner:



SCAN ME

Ritter Autoclave Class B
CleanTec CB 23

Made by Ritter Germany 

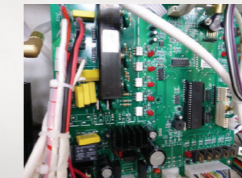
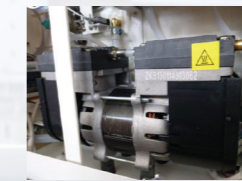
CleanTec CB23 with LCD Display

The CleanTec CB23 is the ideal autoclave for all dental clinics that demand an effective and reliable autoclave with more space for instruments, thanks to the 23 liter chamber.

Patented autolock system

LCD-Display

S T E R I L I Z A T I O N



High-Quality Components & Reliability

The high performance pump has a very long lifespan and a 2-year warranty. Also it guarantees a low operation noise level (<54 dBA in 1 m distance). The premium valves come with a 4-year warranty. The stainless steel tank is robust and easy to clean. Revised electronic components and software updates correspond to the latest standards.

Due to the high quality of the components, the CleanTec CB23 requires only little maintenance.

The CE-certified device is also available in an 80 liter version for big clinics.

Including internal printer

Made by Ritter Germany 

Sterilizable products:



Solid instruments



Hollow instruments

Wrapped instruments



Porous loads

Performance & Efficiency

The CleanTec CB23 fully corresponds to the requirements of class B autoclaves. The high performance double stage vacuum pump creates a fractionated pre- and post vacuum, which guarantees efficient sterilization and drying processes. The optimum heat retention ensures a low level of energy consumption.

Also the CleanTec CB23 facilitates the quick availability of instruments and textiles after 23 minutes (unwrapped solid cycle) and only 13 minutes (quick cycles). The patented autolock door-system provides extra safety. The CleanTec CB23 contains a built-in water storage tank and can optionally be connected to the demineralization system and the wastewater drain.

