



# Calypso

Multifunctional  
DR system

[www.gmmspa.com](http://www.gmmspa.com)





## APPLICATION FLEXIBILITY

Enhanced examinations and valuable diagnostic results in any DR applications.

- Traumatology
- Emergency
- Routine and specialized examinations
- Stitching





## STATE-OF-THE-ART DESIGN AND TECHNOLOGY

Adjustable-height examination table with tabletop floating in the four directions: easy and fast patient positioning and maximum patient throughput.



## MULTIFUNCTIONAL EFFICIENCY



The compact and solid structure of the ceiling stand provides flexible and smooth movements.

- Manual or automatic collimation
- Auto-tracking
- Wide touch screen ensuring the control of the complete system



An advanced technology provides the automatic alignment of the X-ray source with the detector movement so that the operator can easily execute AP projections and oblique incidences even varying the SID.



The detector 90°/20° tilt from the vertical position facilitates patient positioning for special incidences of the skull and joints. The detector 90° rotation from the horizontal position ensures easy and quick examinations of patients carried on stretchers.

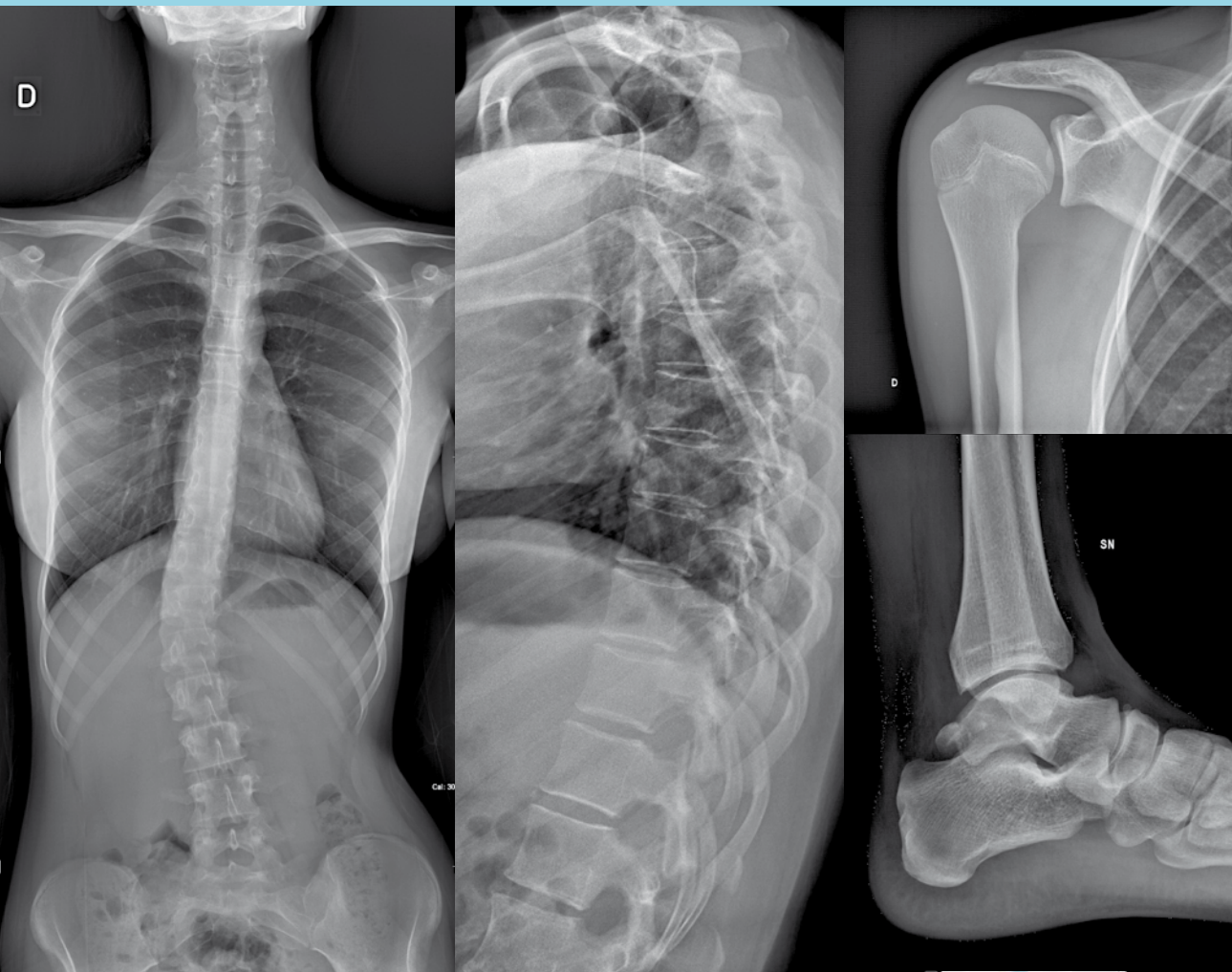
The wall stand can be vertically adjusted and tilted for the best execution of examinations of the skull, thorax, column and limbs.



MAXIMUM  
OPERATIONAL  
RELIABILITY



A wide range of configurations is available to meet any application need.



ENHANCED  
IMAGE  
QUALITY





Calypso Eng - 3923 - 0317 Data is subject to change without prior notice

## GET IN TOUCH

GENERAL MEDICAL MERATE SPA  
Via Partigiani, 25  
24068 SERIATE (BG) - Italy

Phone +39 035 45 25 311  
Fax +39 035 29 77 87  
info@gmmspa.com

[www.gmmspa.com](http://www.gmmspa.com)

